



ÉQUIPE DE RECHERCHE SUR  
LE PLACEMENT ET L'ADOPTION  
en protection de la jeunesse

# VEILLE INFORMATIONNELLE - FÉVRIER 2022

Équipe de recherche sur le placement et l'adoption  
en protection de la jeunesse

## EXPÉRIENCE ET FORMATION DES PARENTS D'ACCUEIL/D'ADOPTION

AEBY, G., & OSSIPOW, L. (2022). ÊTRE PARENTS À PART ENTIÈRE? PARENTALITÉ, PARENTÉ ET RECONNAISSANCE DES FAMILLES D'ACCUEIL. *RECHERCHES FAMILIALES*, 19(1), 57-68.

DOWNES, C., KIERAN, S., & TIERNAN, B. (2022). "NOW I KNOW I'M NOT THE ONLY ONE": A GROUP THERAPY APPROACH FOR ADOPTIVE PARENTS. *CHILD CARE IN PRACTICE*, 28(1), 43-51.

POPE, N. D., RATLIFF, S., MOODY, S., BENNER, K., & "JAY" MILLER, J. (2022). PEER SUPPORT FOR NEW FOSTER PARENTS: A CASE STUDY OF THE KENTUCKY FOSTER PARENT MENTORING PROGRAM. *CHILDREN AND YOUTH SERVICES REVIEW*, 133, 106358.

## IMPACT ET EXPÉRIENCE DE PLACEMENT

COSTA, M., MOTA, C. P., & MATOS, P. M. (2022). PREDICTORS OF PSYCHOSOCIAL ADJUSTMENT IN ADOLESCENTS IN RESIDENTIAL CARE: A SYSTEMATIC REVIEW. *CHILD CARE IN PRACTICE*, 28(1), 52-81.

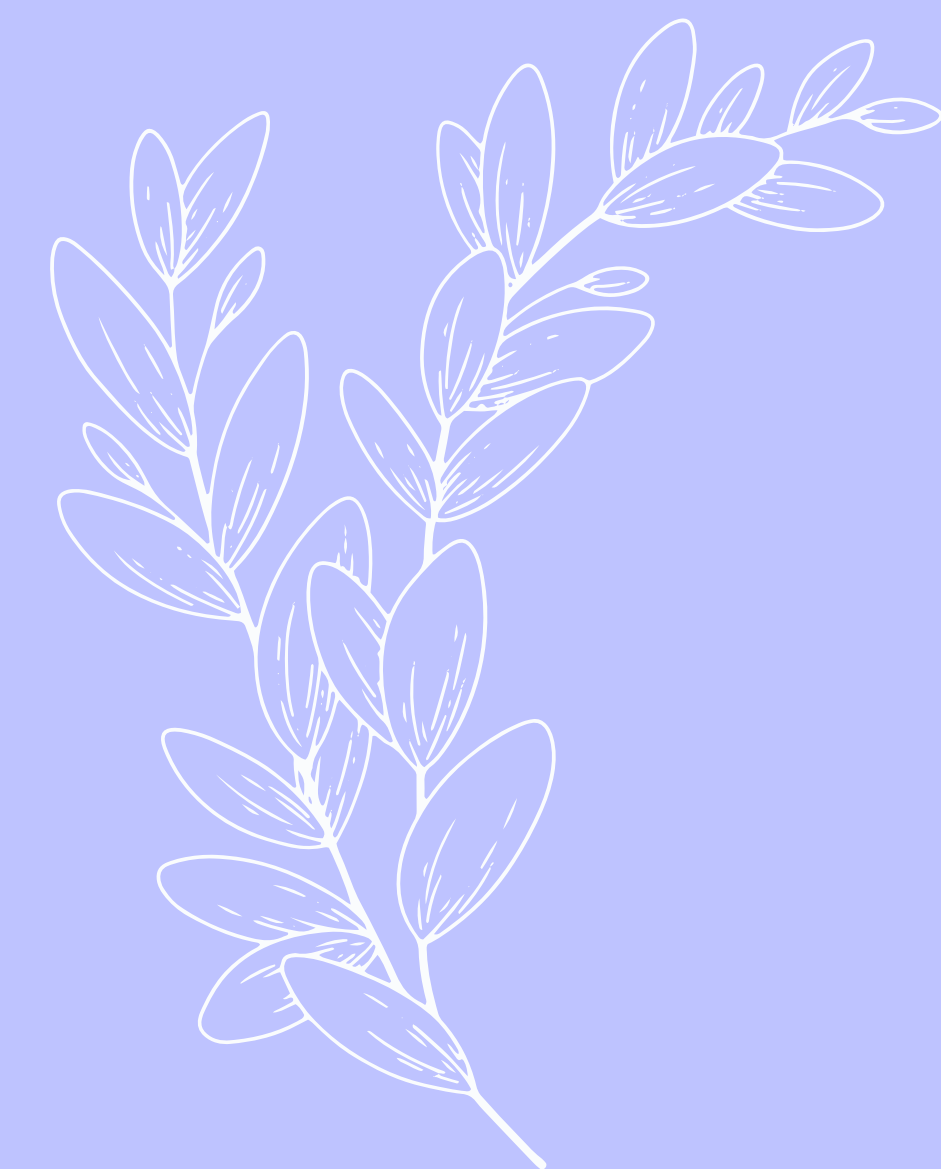
PASTOR, C., BALSSELLS, M. À., VAQUERO, E., MATEO, M., & CIURANA, A. (2022). UNINFORMED, AFRAID AND CONFUSED: WHAT CHILDREN NEED TO KNOW AT THE BEGINNING OF THEIR FOSTER CARE PROCESS. *CHILD CARE IN PRACTICE*, 28(1), 102-118.

SALIFU YENDORK, J., BOADU, S. O., AMANKWAH-POKU, M., & OSEI-TUTU, A. (2022). FORGIVENESS IN CHILDREN PLACED IN CHILDREN'S HOMES: UNDERSTANDING, PROCESS AND MOTIVATION FOR FORGIVENESS. *CHILD CARE IN PRACTICE*, 28(1), 20-42.

## RÉUNIFICATION

CHATEAUNEUF, D., DRAPEAU, S., LEBLANC, K., SAINT-JACQUES, M.-C., NOËL, J., & FORTIN, M.-C. (2022). LE RETOUR EN MILIEU FAMILIAL À LA SUITE D'UN PLACEMENT EN PROTECTION DE L'ENFANCE : REGARD SUR LES DYNAMIQUES RELATIONNELLES ENTRE PARENTS ET INTERVENANTS SOCIAUX. *RECHERCHES FAMILIALES*, 19(1), 69-83.

LUU, B., COLLINGS, S., & WRIGHT, A. C. (2022). A SYSTEMATIC REVIEW OF COMMON ELEMENTS OF PRACTICE THAT SUPPORT REUNIFICATION. *CHILDREN AND YOUTH SERVICES REVIEW*, 133, 106342.





## FAMILLE D'ACCUEIL DE PROXIMITÉ

KOH, E., DAUGHTERY, L., & WARE, A. (2022). INFORMAL KINSHIP CAREGIVERS' PARENTING EXPERIENCE. *CHILDREN AND YOUTH SERVICES REVIEW*, 133, 106360.

## TRANSITION À LA VIE ADULTE : COMPORTEMENTS À RISQUE ET PARENTALITÉ

MARTIN, K. J., NAUSE, K., GREINER, M. V., & BEAL, S. J. (2022). MODELING CHANGES IN ADOLESCENT HEALTH RISK BEHAVIORS APPROACHING AND JUST AFTER THE TIME OF EMANCIPATION FROM FOSTER CARE. *CHILD ABUSE & NEGLECT*, 124, 105439.

SHPIEGEL, S., APARICIO, E. M., SMITH, R., GRINNELL-DAVIS, C., & KING, B. (2022). EARLY FATHERHOOD AND SOCIOECONOMIC OUTCOMES AMONG YOUNG MEN TRANSITIONING FROM FOSTER CARE IN THE UNITED STATES. *CHILDREN AND YOUTH SERVICES REVIEW*, 133, 106346.

## COVID-19 : EXPÉRIENCE DES PARENTS D'ACCUEIL

BERNEDO, I. M., OLIVER, J., URBANO-CONTRERAS, A., & GONZÁLEZ-PASARÍN, L. (2022). PERCEIVED STRESS, RESOURCES AND ADAPTATION IN RELATION TO THE COVID-19 LOCKDOWN IN SPANISH FOSTER AND NON-FOSTER FAMILIES. *CHILD & FAMILY SOCIAL WORK*, 27(1), 55-66.

GOLDBERG, A. E., MCCORMICK, N., & VIRGINIA, H. (2022). SCHOOL-AGE ADOPTED CHILDREN'S EARLY RESPONSES TO REMOTE SCHOOLING DURING COVID-19. *FAMILY RELATIONS*, 71(1), 68-89.

WHITT-WOOSLEY, A., SPRANG, G., & ESLINGER, J. (2022). FOSTER CARE DURING THE COVID-19 PANDEMIC: A QUALITATIVE ANALYSIS OF CAREGIVER AND PROFESSIONAL EXPERIENCES. *CHILD ABUSE & NEGLECT*, 124, 105444.

COVID-19 : EXPÉRIENCE DES PARENTS D'ACCUEIL XU, Y., JEDWAB, M., WU, Q., LEVKOFF, S. E., & XU, L. (2022). RISK AND PROTECTIVE FACTORS ASSOCIATED WITH GRANDPARENT KINSHIP CAREGIVERS' PSYCHOLOGICAL DISTRESS IN COVID-19: KINSHIP LICENSE STATUS AS A MODERATOR. *CHILD & FAMILY SOCIAL WORK*, 27(1), 41-54.

